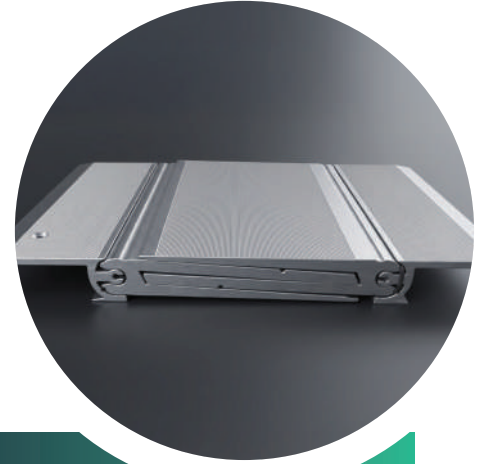


Profile Details

The FR-18 is a heavy-duty, surface-mounted expansion joint system manufactured entirely from extruded aluminum. It is designed with a low-profile cover plate that interlocks over the joint, ensuring a flush finish with minimal height difference. The system provides durability and long-lasting performance under heavy pedestrian and trolley traffic, making it an ideal solution for hygienic and clean flooring applications.



Application

The FR-18 system functions by allowing structural and thermal movement through its engineered interlocking aluminum profiles. Its smooth surface eliminates dirt traps and ensures easy cleaning, which is critical in environments where hygiene is a top priority. The system is specifically designed for hospitals, laboratories, pharmaceutical facilities, and food processing areas where sanitary standards must be maintained, while also being suitable for other heavy-duty interior floors.

Material & Finish

The entire system is fabricated from high-strength extruded aluminum alloy 6063-T6 in compliance with ASTM B-221/B-221M, offering superior rigidity and durability for long-term service. The aluminum components are available in mill finish or natural anodized finish, while stainless steel fasteners are used to ensure secure and corrosion-resistant installation.

Compatibility

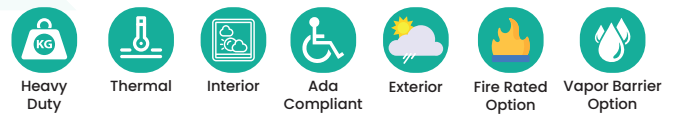
The FR-18 model is compatible with a wide variety of hygienic flooring finishes including epoxy resin, vinyl, terrazzo, and ceramic tiles. Its flush, surface-mounted design makes it particularly effective in cleanroom and hygienic applications where ease of maintenance and sanitary compliance are essential.

Optional Accessory

Optional accessories for the FR-18 include moisture barriers to prevent liquid penetration, fire barriers for compliance with fire protection requirements, and prefabricated corner or transition pieces for precise architectural detailing and simplified installation.

Profile Guide

All Aluminum Surface Mounted Expansion Joint System
for Flooring Applications



Application	Joint Width (mm)	Fram Height (H) (mm)	Sightline (S) (mm)
Floor	200	33	350 (F)

Materials Specifications

Chemical Composition 6063

Application	Si	Fe	Cu	Mn	Mg	Zn	Ti	Cr
Composition of 6063 as per ASTM B-221	0.2-0.6	0.35	0.1	0.1	0.45-0.9	0.1	0.1	0.1

Materials Specifications

Physical Properties 6063-T6

Specialties	Unit	Value
Density	gm/cm ³	2.71
Tensile Strength	MPA	206
Elongation in 2 inch or 50 mm	Percent	8%
Yield Strength	MPA	172

Materials Specifications

FLAT-CORNER

